



LPU ONLINE

CERTIFICATE IN NEXTGEN

OVERVIEW

The **NextGen Certificate** is designed to equip and empower leaders with the knowledge, skills, and spiritual foundation needed to effectively disciple and mentor the next generation. This program focuses on developing a strong personal foundation in Christ, fostering a healthy ministry lifestyle, and cultivating leadership habits that promote long-term impact. Through biblical teaching, practical ministry strategies, and exposure to various models of NextGen ministry, students will gain the tools to effectively engage and teach today's youth in a way that is both culturally relevant and theologically sound. Additionally, the program emphasizes the importance of spiritual, emotional, and mental well-being, ensuring leaders can sustain a thriving ministry while investing in the holistic growth of those they serve. With a balance of theological depth, practical application, and leadership development, the NextGen Certificate provides a comprehensive framework for those called to lead the next generation with wisdom, purpose, and resilience.

ACCREDITATION

LPU is accredited by the Association of Biblical Higher Education and the WASC Senior College and University Commission. Students will benefit from our team of faculty and staff are top-of-the-line servant-leaders. However, the online certificate program is designed as a not-for-credit program which allows us to offer it at a very low cost. Students will have the option to choose between a Standard Track and Advanced Track. Students in the Advanced Track will complete additional work which provides the opportunity to qualify for Credit for Prior Learning towards an accredited degree program at LPU.

SCHEDULE & WORKLOAD

When you enroll in the certificate program, you will have the option to choose from the standard track or advanced track. Students in the Standard Track can expect each course to take approximately 25-30 hours. Students in the Advanced Track can expect each course to take approximately 40 hours due to additional requirements.



PROGRAM COST

\$340 for the entire certificate program

CONTACT US

CALL

(909) 706-3012

EMAIL

lpunonline@lifepacific.edu

WEB

lifepacific.edu/nextgen



Scan the QR code

COURSES

• Personal Life of the NextGen Leader

Ministry at any level can be a challenge, especially when having to do it alone. This course is designed to give you the knowledge to get started in NexGen ministry so that you can feel equipped to effectively lead and develop your ministry. This course will have speakers, readings, and activities to stimulate critical thinking skills in order to come up with the policies and values to effectively live out the ministry of a NextGen Leader.

• Effective Biblical Teaching

How we read the Bible is important. How we understand the Bible can change our outlook on theology and the church for the future and the present. It is our job as NextGen leaders to equip our students with the manner in which they read and interpret scripture. This course will dive into the ways that we can effectively teach the Bible so that students can understand it for today's culture.

• Models of NextGen Ministry

Innovation, creativity, and development are key to a growing ministry. But those do not necessarily mean that you need to reinvent the wheel. There are always parts of ministry that can work at any time and any place. There are different models that can apply throughout culture and time, but may need that special personal touch. Student will learn how these different examples and models can help shape the context and culture that their NextGen ministry is in to develop a long lasting ministry.

• Healthy Dynamics

There are many different parts to your ministry, all that need your attention. While it can feel overwhelming, we all need the care and attention in order to finish well. Spiritual, emotional, mental, and physical health are important for a pastor, a leader, and a student of a NextGen ministry to prioritize. This course will dive into the important dynamics that your ministry should have in order to promote healthy spiritual lives.

HOW TO SIGN UP

New students are enrolled weekly! You must submit your application and payment to be enrolled. Sign-up now and learn more at lifepacific.edu/nextgen

WANT TO LEARN MORE?

Call our Admissions Office at
(909) 706-3012

PROFESSORS AND GUEST SPEAKERS



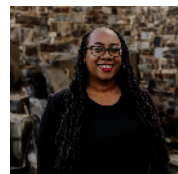
Ty Austin



Tim Lee



Jeff Tolle



Jen Thigpen



AJ Swoboda



Natalie Werking



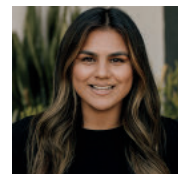
Dan Fernandez



Dawn Jackson



Dan Britton



Wendy Suarez-Ramos



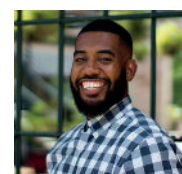
Kurt Fuller



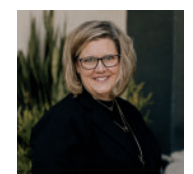
Russell Joyce



Marcus Robinson



Marcus Ellington



Tami Jones